

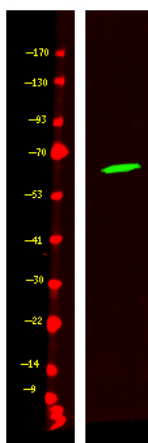


GADL1 rabbit pAb

Catalog No	YP-Ab-17256
Isotype	IgG
Reactivity	Human, Mouse
Applications	IHC, WB
Gene Name	GADL1
Protein Name	Glutamate decarboxylase-like protein 1 (EC 4.1.1.-)
Immunogen	Synthesized peptide derived from human N-terminal GADL1
Specificity	This antibody detects endogenous levels of GADL1 at Human, Mouse
Formulation	Liquid in PBS containing 50% glycerol, and 0.02% sodium azide.
Source	Rabbit, polyclonal
Purification	The antibody was affinity-purified from rabbit serum by affinity-chromatography using specific immunogen.
Dilution	WB 1:500-2000 IHC 1:50-200
Concentration	1 mg/ml
Purity	≥90%
Storage Stability	-20°C/1 year
Synonyms	Glutamate decarboxylase-like protein 1 (EC 4.1.1.-)
Observed Band	
Cell Pathway	
Tissue Specificity	Expressed very weakly in neurons and not detected in astrocytes, brain or liver.
Function	May catalyze the decarboxylation of L-aspartate, 3-sulfinio-L-alanine (cysteine sulfinic acid), and L-cysteate to beta-alanine, hypotaurine and taurine, respectively. Does not exhibit any decarboxylation activity toward glutamate.
Background	
matters needing attention	Avoid repeated freezing and thawing!
Usage suggestions	This product can be used in immunological reaction related experiments. For more information, please consult technical personnel.



Products Images



Western Blot analysis of Hela cell lysis, using primary antibody at 1:1000 dilution. Secondary antibody(catalog#:RS23920) was diluted at 1:10000